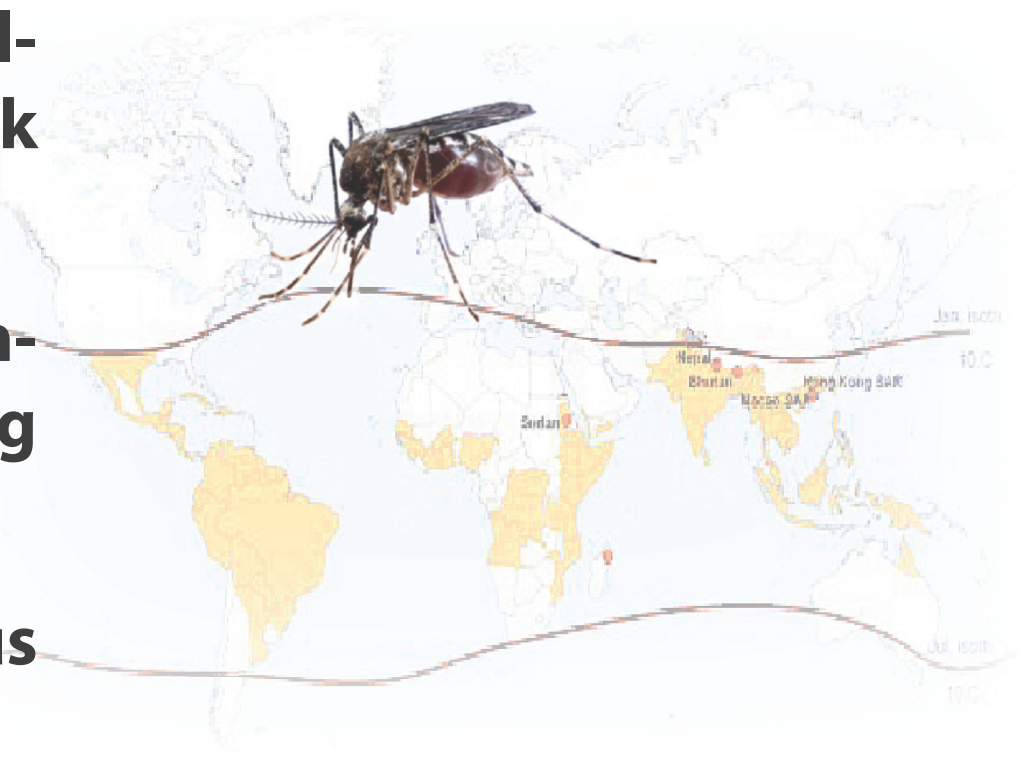


Dengue virus is spread by the bite of infected *Aedes mosquitoes*. It causes a wide range of illnesses from mild asymptomatic illness to severe fatal dengue haemorrhagic fever/dengue shock syndrome (DHF/DSS). There are four dengue virus serotypes: DEN-1, DEN-2, DEN-3 and DEN-4.

In 128 countries, **400 million** people are infected each year and **3.9 billion** people are at risk of infection with dengue viruses. Early diagnosis is critical for managing patient care and controlling disease spread.

**OnSite Dengue Rapid Test** provides the solution for diagnosing dengue virus infection at various disease stages.

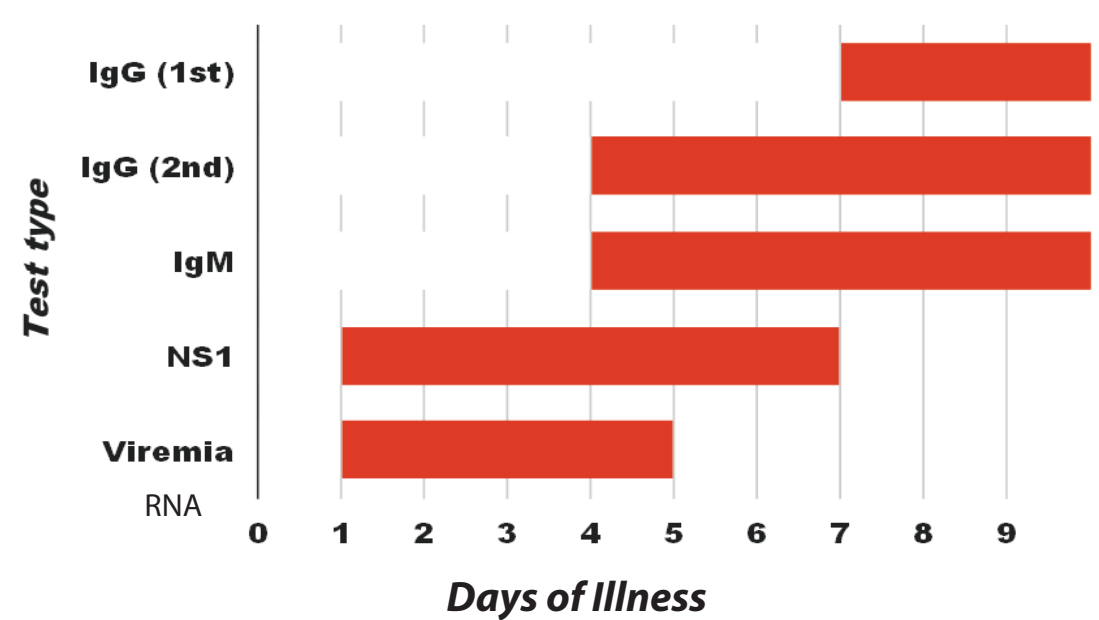


## Typical Dengue Symptoms

Fever plus 2 of the following symptoms:

- Worsening abdominal pain
- Persistent vomiting
- Liver enlargement
- Mucosal bleeding
- High hematocrit with low platelets
- Lethargy or restlessness
- Serosal effusions

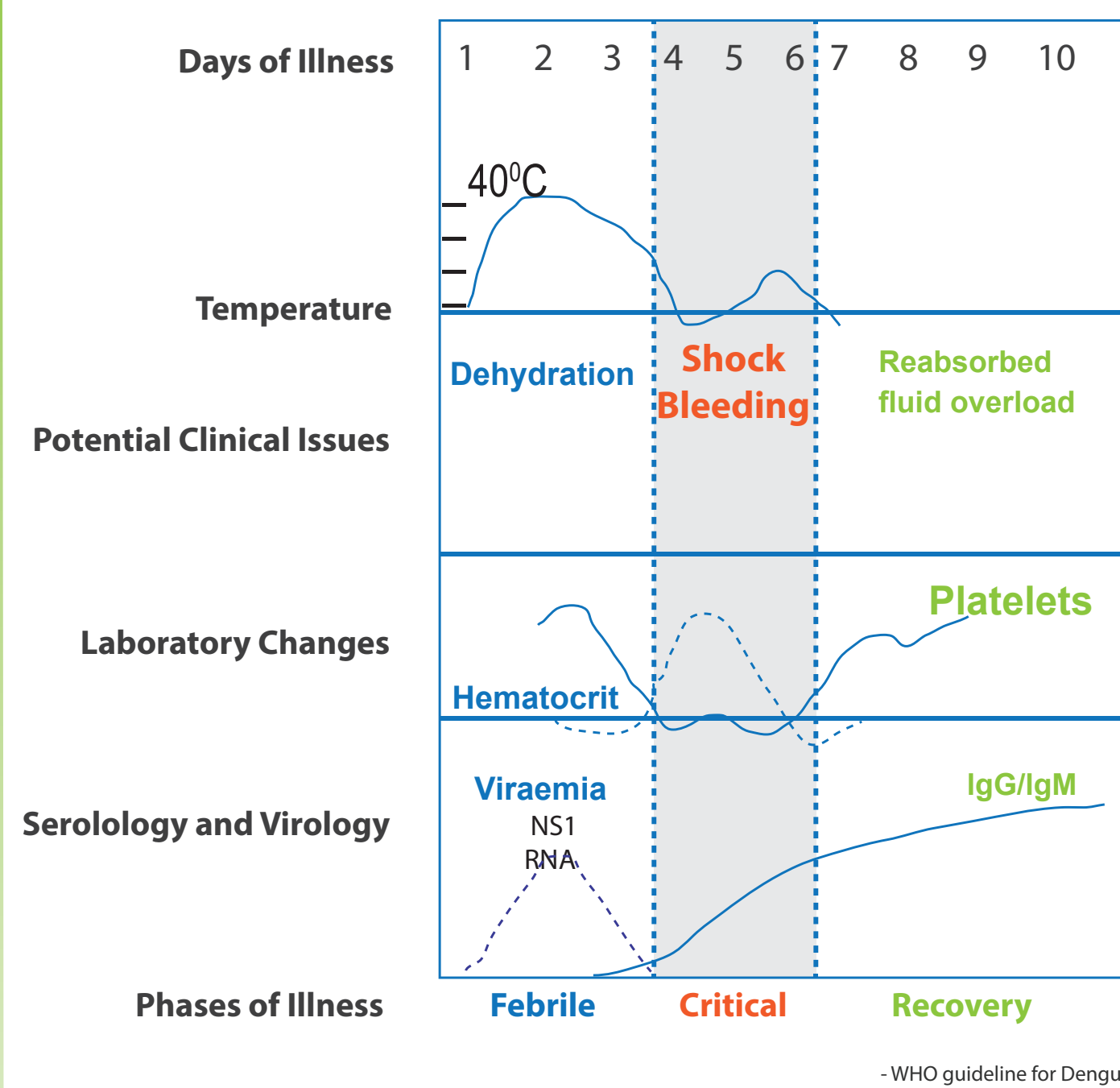
## When Tests Become Positive



## Differentiates Fever Caused by

- Chikungunya
- Malaria
- Leptospirosis
- Viral hemorrhagic fever
- Typhoid fever
- Meningococcal disease
- Measles
- Influenza

## DENGUE FEVER COURSE



## OnSite Dengue Ag (NS1) RDT

- Utilizes 4 in-house antibodies for detection of DEN-1, DEN-2, DEN-3, and DEN-4 NS1 antigens
- Uses serum, plasma or whole blood
- Independent studies in Africa, S. America, Indian subcontinent reported excellent performance.
- *Positivia* Rapid Test Control kit is available to verify test quality.

## OnSite Dengue IgG/IgM RDT

- CDC (USA) licensed technology for better IgM detection
- Uses serum, plasma and whole blood
- Independent studies in Africa, S. America, Indian subcontinent reported excellent performance.

## OnSite Dengue Ag/IgG/IgM RDT

- Detects Dengue Ag and Abs in a single test device
- Covers acute to convalescence stage
- Uses serum, plasma and whole blood

**FOR MORE INFORMATION PLEASE CONTACT:**

Distributor information

### JAN 2016

S	M	T	W	T	F	S
				1	2	
3	4	5	6	7	8	9
10	11	12	13	14	15	16
17	18	19	20	21	22	23
24	25	26	27	28	29	30
31						

### FEB 2016

S	M	T	W	T	F	S
	1	2	3	4	5	6
7	8	9	10	11	12	13
14	15	16	17	18	19	20
21	22	23	24	25	26	27
28	29					

### MAR 2016

S	M	T	W	T	F	S
		1	2	3	4	5
6	7	8	9	10	11	12
13	14	15	16	17	18	19
20	21	22	23	24	25	26
27	28	29	30	31		

### APR 2016

S	M	T	W	T	F	S
				1	2	
3	4	5	6	7	8	9
10	11	12	13	14	15	16
17	18	19	20	21	22	23
24	25	26	27	28	29	30

### MAY 2016

S	M	T	W	T	F	S
1	2	3	4	5	6	7
8	9	10	11	12	13	14
15	16	17	18	19	20	21
22	23	24	25	26	27	28
29	30	31				

### JUN 2016

S	M	T	W	T	F	S
			1	2	3	4
5	6	7	8	9	10	11
12	13	14	15	16	17	18
19	20	21	22	23	24	25
26	27	28	29	30		

### JUL 2016

S	M	T	W	T	F	S
				1	2	
3	4	5	6	7	8	9
10	11	12	13	14	15	16
17	18	19	20	21	22	23
24	25	26	27	28	29	30
31						

### AUG 2016

S	M	T	W	T	F	S
	1	2	3	4	5	6
7	8	9	10	11	12	13
14	15	16	17	18	19	20
21	22	23	24	25	26	27
28	29	30	31			

### SEP 2016

S	M	T	W	T	F	S
		1	2	3		
4	5	6	7	8	9	10
11	12	13	14	15	16	17
18	19	20	21	22	23	24
25	26	27	28	29	30	

### OCT 2016

S	M	T	W	T	F	S
					1	
2	3	4	5	6	7	8
9	10	11	12	13	14	15
16	17	18	19	20	21	22
23	24	25	26	27	28	29
30						

### NOV 2016

S	M	T	W	T	F	S
		1	2	3	4	5
6	7	8	9	10	11	12
13	14	15	16	17	18	19
20	21	22	23	24	25	26
27	28	29	30			

### DEC 2016

S	M	T	W	T	F	S
				1	2	3
4	5	6	7	8	9	10
11	12	13	14	15	16	17
18	19	20	21	22	23	24
25	26	27	28	29	30	31